



44 Greenwell Street, Fauldhouse

Offers Over £135,000



44 Greenwell Street

Fauldhouse

Welcome to Greenwell Street, Fauldhouse, a beautifully renovated two bedroom end terrace home presented to the market in true move in condition. Offering stylish interiors throughout, a private rear garden with a summer house and excellent commuter links, this property represents an outstanding opportunity for first time buyers, downsizers or anyone seeking a home ready to enjoy from day one.

Upon entering, you are welcomed into an attractive entrance hallway that immediately sets the tone for the quality and care found throughout the property.

Positioned to the front of the home is the spacious lounge, a bright and inviting living space featuring a bespoke media wall, a large bay window that floods the room with natural light and ample room for two large sofas and additional furnishings. It is the perfect setting for relaxing, entertaining or enjoying family time.

To the rear of the property is the impressive kitchen, which spans the full width of the home. Finished to a high standard, the kitchen is fitted with integrated appliances including a fridge freezer, double oven and a five point induction hob. Complemented by chrome fittings, ample worktop space and modern cabinetry, this stylish space offers both practicality and contemporary appeal. A rear door provides direct access to the garden.

Upstairs, the property continues to impress with two generously proportioned double bedrooms. The principal bedroom is situated to the front of the home and comfortably accommodates a king size bed with bedside cabinets while also benefiting from fitted wardrobe storage and additional built in storage.



Bedroom two is another spacious double room, capable of accommodating a king size bed with bedside cabinets and also features a fitted wardrobe while enjoying pleasant views over the rear garden.

Externally, the property enjoys a private rear garden that offers an excellent outdoor retreat. Despite its north facing orientation, the garden enjoys plenty of sunlight and provides a fantastic space for relaxing and entertaining. A substantial summer house adds further versatility and can be utilised as a home office, hobby room, gym or additional storage space. The property also offers scope to create a private driveway to the front, subject to the necessary permissions.

Greenhall Street enjoys a convenient position within the heart of Fauldhouse, a well connected village popular with commuters and families alike. Fauldhouse Train Station is within walking distance, providing regular services to both Edinburgh and Glasgow, while the nearby M8 motorway offers excellent road links across Central Scotland. Local shops, amenities and primary schooling are all close at hand, creating a strong sense of community and convenience.

Combining stylish modern interiors, generous room proportions, excellent outdoor space and a highly desirable location, this exceptional home is ready for its next owners to move straight in and enjoy.



Home Report Value- £140,000

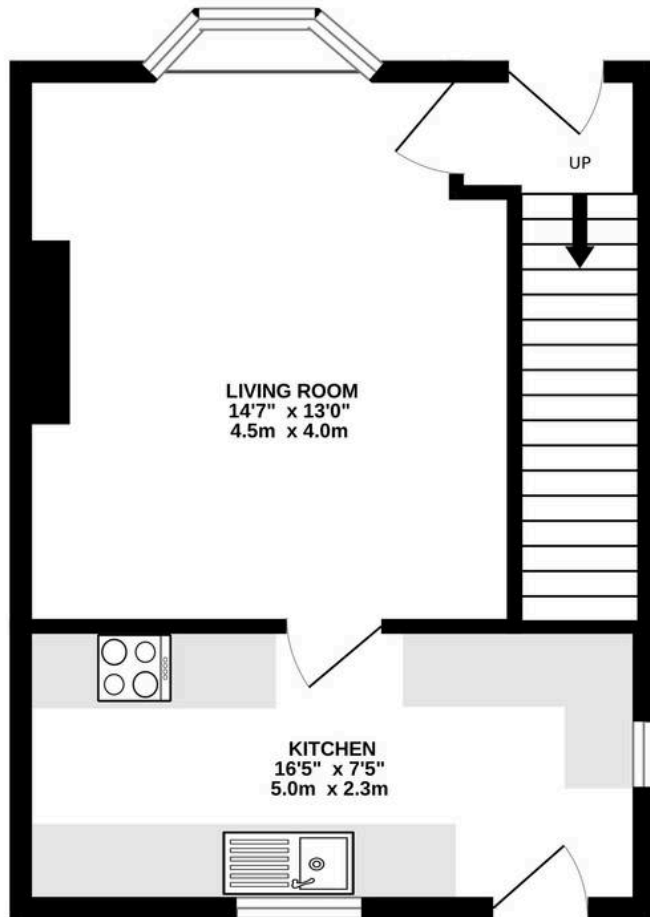
EPC- C

Council Tax Band - A

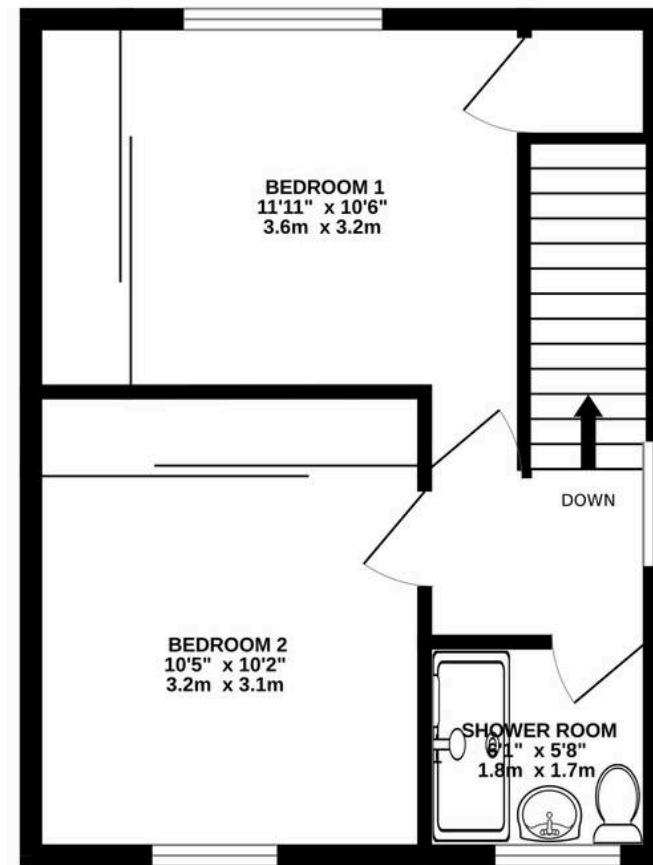
Square Ft- 743/ 69m2



GROUND FLOOR
363 sq.ft. (33.8 sq.m.) approx.



1ST FLOOR
362 sq.ft. (33.6 sq.m.) approx.



TOTAL FLOOR AREA : 726 sq.ft. (67.4 sq.m.) approx.

Whilst every attempt has been made to ensure the accuracy of the floorplan contained here, measurements of doors, windows, rooms and any other items are approximate and no responsibility is taken for any error, omission or mis-statement. This plan is for illustrative purposes only and should be used as such by any prospective purchaser. The services, systems and appliances shown have not been tested and no guarantee as to their operability or efficiency can be given.
Made with Metropix ©2026



Bridges Properties

15 Shairps Business Park, Livingston - EH54 5FD

01501519435

info@bridges-properties.co.uk

www.bridges-properties.co.uk/

