



18 Bisset Place, Bathgate

Offers Over £220,000



18 Bisset Place

Bathgate

Tucked away within the ever popular Wester Inch development in Bathgate, this stunning three bedroom semi detached home, built by Miller Homes in 2016, offers immaculate, move in ready accommodation that is sure to appeal to a wide range of buyers, from first time purchasers to downsizers and growing families alike. From the moment you arrive, the excellent curb appeal is immediately apparent, with a spacious driveway providing off street parking for two cars and a beautifully maintained exterior setting the tone for what lies inside. Step through the front door and the care and attention that has gone into this home is instantly clear to see, with stylish interiors, modern finishes and a true sense of warmth throughout. Positioned to the right hand side at the front of the property, the lounge is a fantastic sized space, flooded with natural light from large windows and finished in a contemporary yet inviting style, creating the perfect place to relax and unwind.

Heading through to the rear of the property, the home opens seamlessly into the stunning kitchen and dining area,. Beautifully decorated with a fresh yellow colour palette bringing warmth and personality to the space, the kitchen is both practical and stylish, complete with integrated appliances, excellent storage and ample room for dining. The thoughtful layout continues with a convenient downstairs WC, which itself benefits from an additional storage cupboard, further enhancing the practicality of the home. Patio doors lead directly out to the rear garden, where you'll find a beautifully landscaped and low maintenance outdoor space, ideal for entertaining guests, enjoying summer evenings or simply relaxing in complete privacy.



Upstairs, the impressive principal bedroom sits to the front of the property and comfortably accommodates a king size bed whilst also benefiting from fitted storage and its own en-suite shower room. To the rear, bedrooms two and three are both highly versatile rooms enjoying pleasant outlooks over the back of the property, offering flexibility to adapt to your needs whether as additional bedrooms, a nursery, dressing room or home office. Completing the upper level is the stylish family bathroom, recently updated and finished with a large contemporary shower, perfectly complementing the immaculate condition found throughout the rest of the home. Bissett Place is the definition of true move in condition, allowing the next owner to simply unpack and start their next chapter from day one.

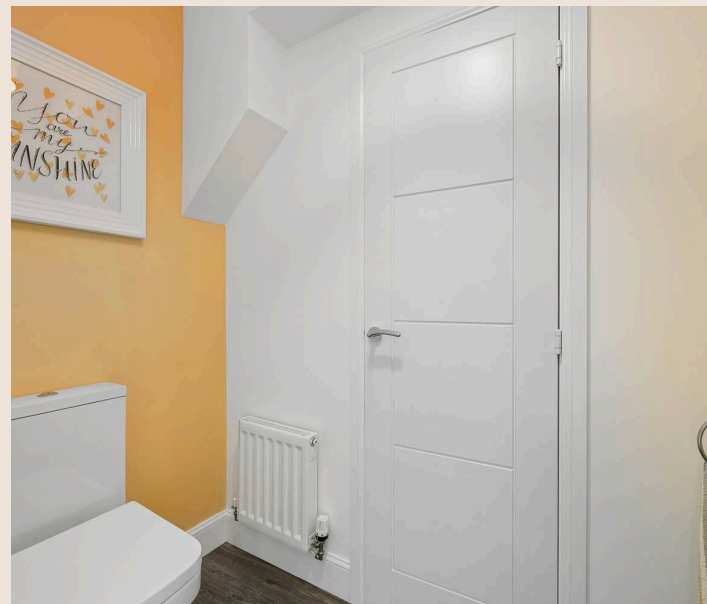
Wester Inch remains one of Bathgate's most sought after developments thanks to its excellent balance of convenience, family living and commuter links. The property is within walking distance of Simpson Primary School, making it ideal for families, whilst a Tesco supermarket and a variety of local shops and amenities are all close by for day to day convenience. Bathgate town centre and the train station are also easily accessible, offering excellent transport links to both Edinburgh and Glasgow.

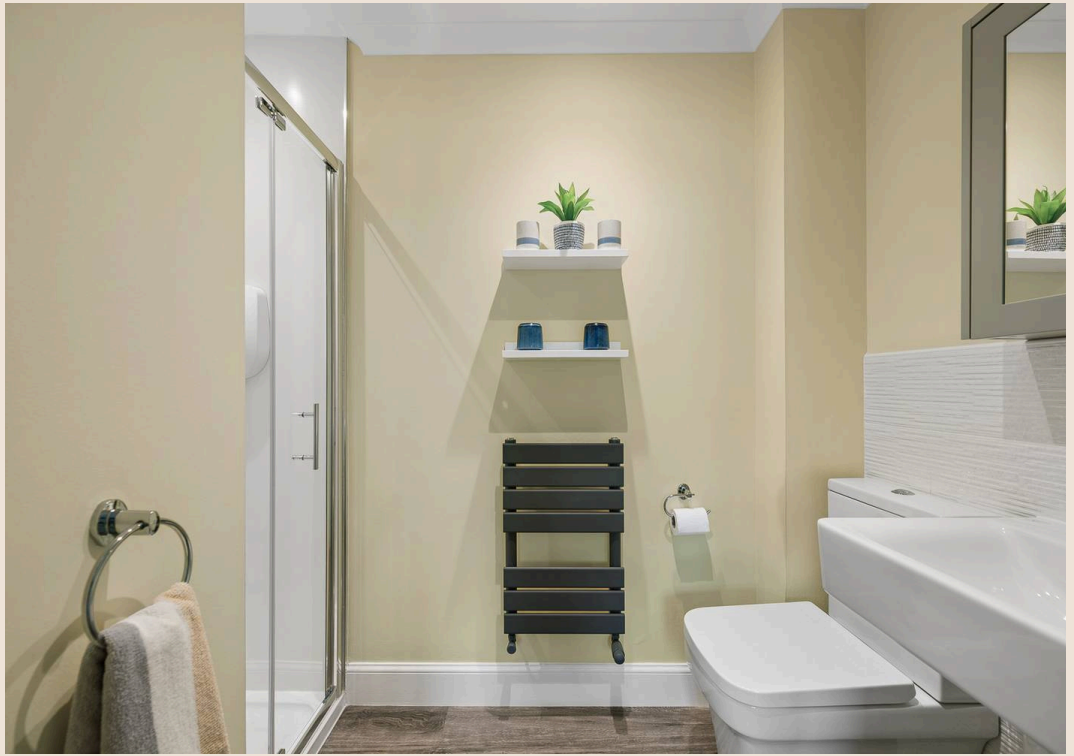
Home Report Value- £230,000

EPC - C

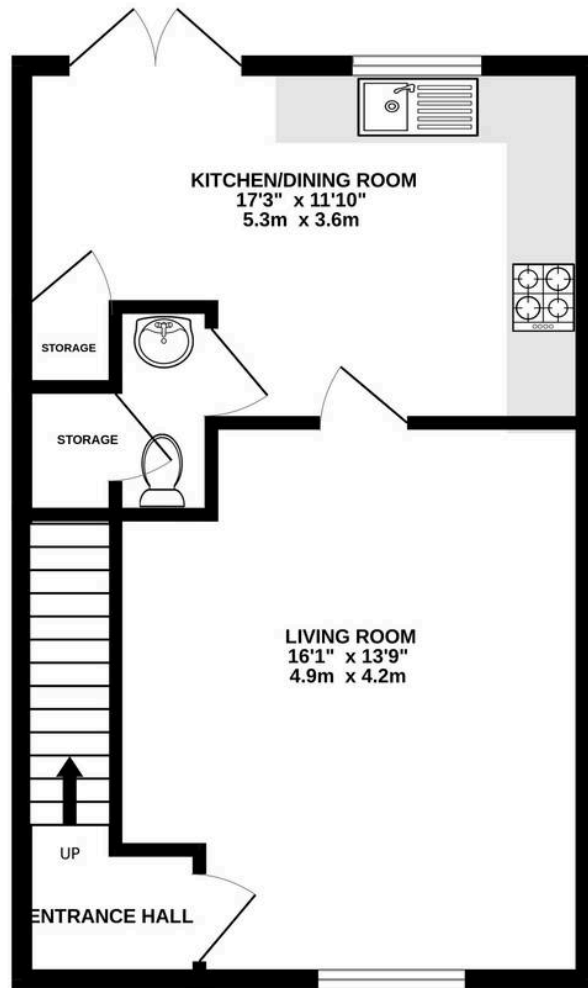
Council Tax Band - D

Square Ft- 840/ 78m2

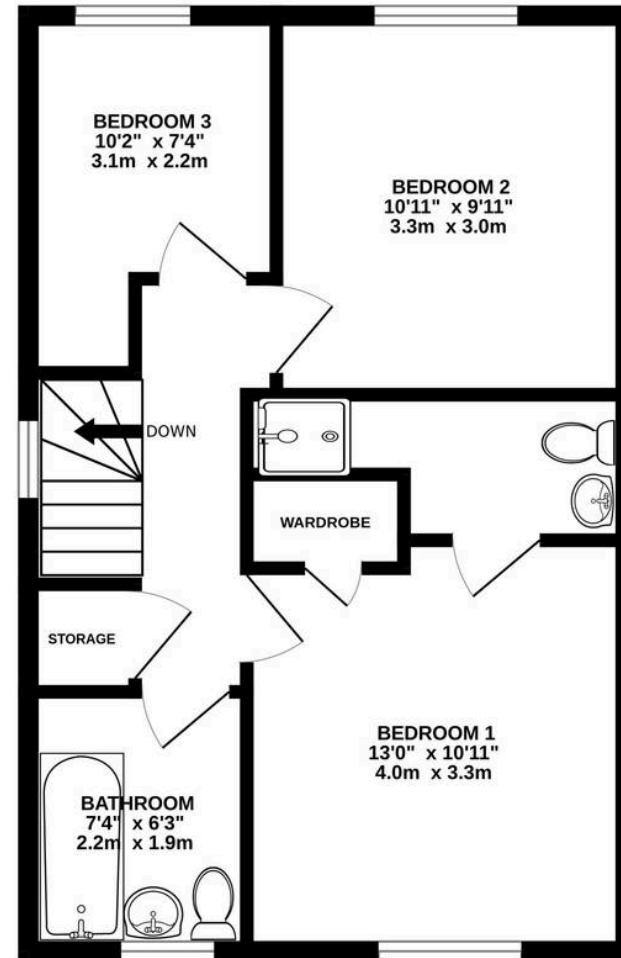




GROUND FLOOR



1ST FLOOR



Whilst every attempt has been made to ensure the accuracy of the floorplan contained here, measurements of doors, windows, rooms and any other items are approximate and no responsibility is taken for any error, omission or mis-statement. This plan is for illustrative purposes only and should be used as such by any prospective purchaser. The services, systems and appliances shown have not been tested and no guarantee as to their operability or efficiency can be given.
 Made with Metropix ©2026



Bridges Properties

15 Shairps Business Park, Livingston - EH54 5FD

01501519435

info@bridges-properties.co.uk

www.bridges-properties.co.uk/

