

**BRIDGES**  
PROPERTIES  
Our Property, Our Priority  
FOR SALE



8 Cleland Street, Whitburn

Offers Over £160,000





## 8 Cleland Street

### Whitburn

Welcome to Cleland Street in Whitburn, a beautifully renovated two-bedroom semi-detached property, finished to a high standard throughout and presented in true move-in condition. With a private driveway for two to three cars, a single-car garage, and a generous east facing rear garden, this home offers the ideal balance of modern living and everyday practicality.

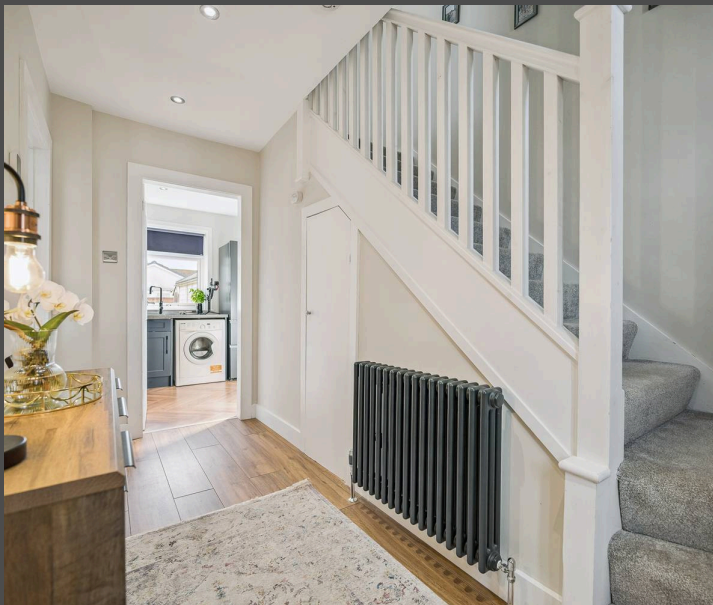
As you step inside, you're welcomed into a bright and elongated entrance hallway that sets the tone for the rest of the home. To the left, the spacious lounge provides a warm and inviting retreat. Fully carpeted and styled with a modern media wall, this room comfortably accommodates two large sofas, with a large front facing window allowing natural light to pour in.

To the rear of the home, the open plan kitchen and dining area spans the full length of the property, an impressive and well-designed space perfect for everyday use and entertaining alike. The kitchen features sleek matte blue cabinetry paired with grey worktop surfaces and black splash-back tiling, giving it a bold and contemporary look. Integrated appliances include a four-point induction hob, oven, and microwave, with designated space for additional white goods such as a fridge-freezer and washing machine. Two large rear windows flood the area with light, while a built-in pantry cupboard adds to the overall practicality. The dining area comfortably fits a table for four, making it the perfect hub for family meals or casual gatherings.





Lounge

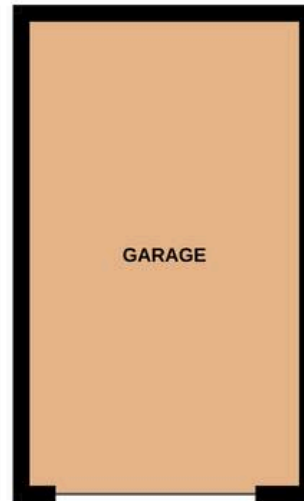
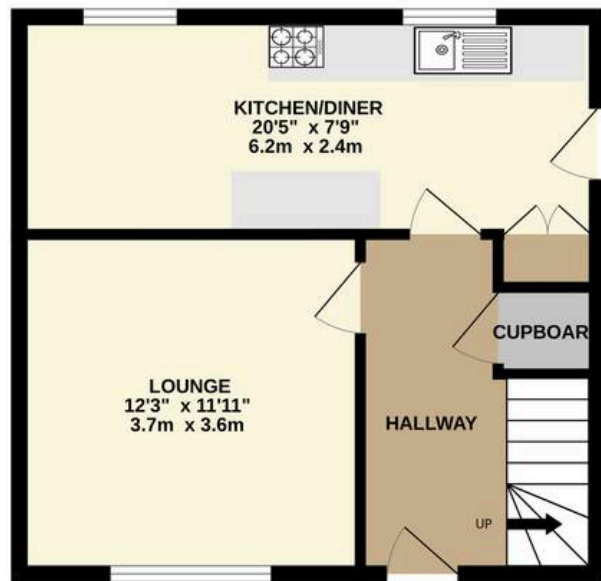




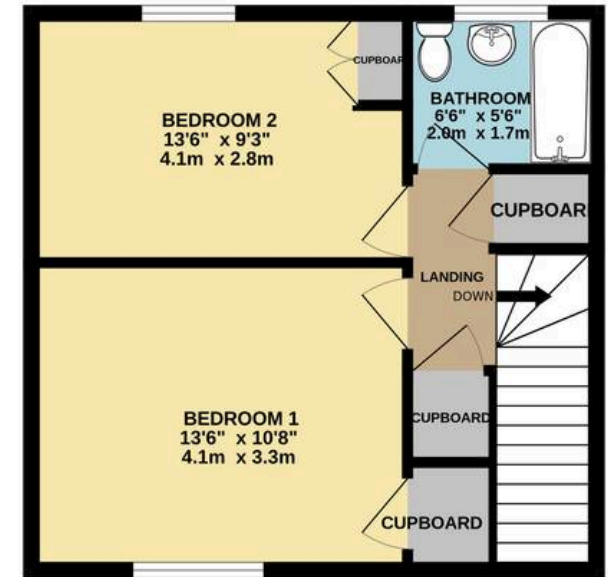




GROUND FLOOR



1ST FLOOR



Whilst every attempt has been made to ensure the accuracy of the floorplan contained here, measurements of doors, windows, rooms and any other items are approximate and no responsibility is taken for any error, omission or mis-statement. This plan is for illustrative purposes only and should be used as such by any prospective purchaser. The services, systems and appliances shown have not been tested and no guarantee as to their operability or efficiency can be given.  
Made with Metropix ©2025





## Bridges Properties

15 Shairps Business Park, Livingston - EH54 5FD

01501519435

[info@bridges-properties.co.uk](mailto:info@bridges-properties.co.uk)

[www.bridges-properties.co.uk/](http://www.bridges-properties.co.uk/)

